

# \$735,032 - 231 61 Festival Way, Sherwood Park

MLS® #E4417220

**\$735,032**

2 Bedroom, 2.00 Bathroom, 1,323 sqft  
Condo / Townhouse on 0.00 Acres

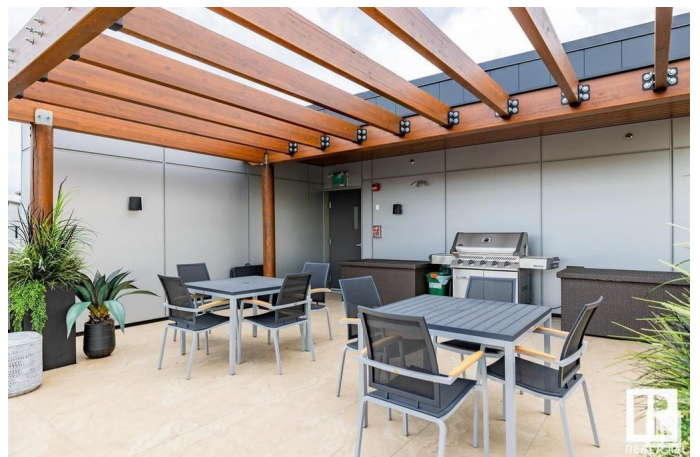
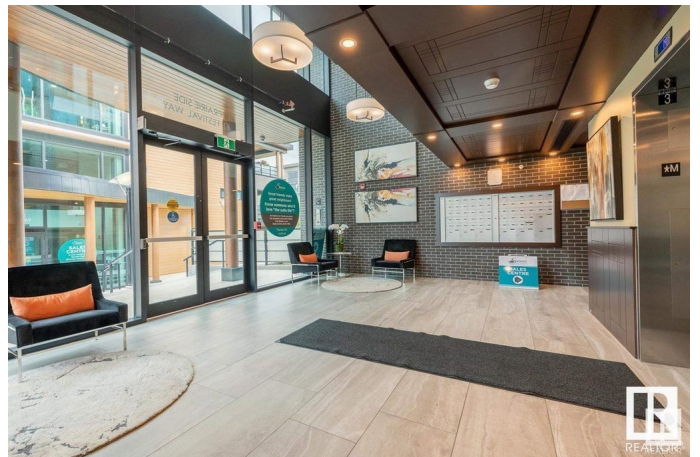
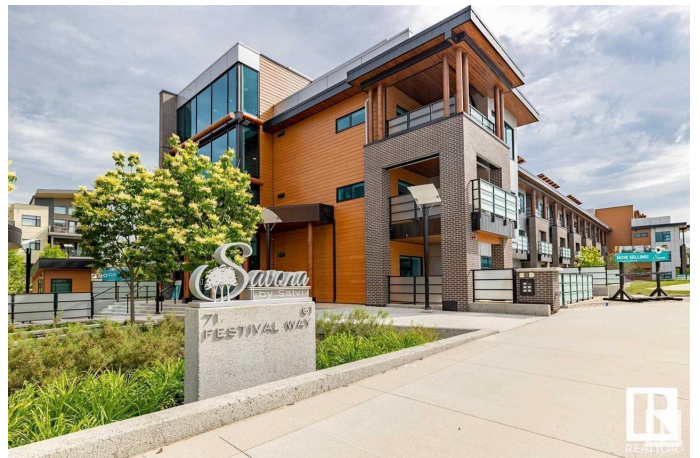
Centre In The Park, Sherwood Park, AB

LUXURY CONDO LIVING in the heart of Sherwood Park! SALVI Group presents... SAVONA at Centre in the Park, offering an impressive variety of suite designs ranging from a 745 SF 1 bedroom to 1730 SF 2 bedroom/den. This 1417 SF "ROMA" features 2 bedrooms, den, 2 full bathrooms, large kitchen with eating bar, open concept kitchen/living/dining space, in-suite laundry & private deck. All units c/w a stainless steel appliance package, AC, window coverings, custom built cabinetry, QUARTZ countertops, HARDWOOD & TILE flooring. High end finishing & craftsmanship throughout, as to be expected from the SALVI name. Also included; underground SECURED parking/storage, access to fitness studio & car wash bay. AMAZING LOCATION - walking distance to restaurants, shopping, Festival Place & close to all lifestyle amenities!

Built in 2019

## Essential Information

MLS® #	E4417220
Price	\$735,032
Bedrooms	2
Bathrooms	2.00
Full Baths	2
Square Footage	1,323



Acres	0.00
Year Built	2019
Type	Condo / Townhouse
Sub-Type	Lowrise Apartment
Style	Single Level Apartment
Status	Active

### **Community Information**

Address	231 61 Festival Way
Area	Sherwood Park
Subdivision	Centre In The Park
City	Sherwood Park
County	ALBERTA
Province	AB
Postal Code	T8A 4Z1

### **Amenities**

Amenities	Air Conditioner, Deck, Exercise Room
Parking	Underground

### **Interior**

Interior Features	ensuite bathroom
Appliances	Dishwasher-Built-In, Dryer, Refrigerator, Stove-Electric, Washer
Heating	Heat Pump, Geo Thermal
# of Stories	4
Stories	4
Has Basement	Yes
Basement	None, No Basement

### **Exterior**

Exterior	Wood, Hardie Board Siding
Exterior Features	Golf Nearby, Landscaped, Park/Reserve, Picnic Area, Shopping Nearby
Roof	EPDM Membrane
Construction	Wood, Hardie Board Siding
Foundation	Concrete Perimeter

### **Additional Information**

Date Listed	January 7th, 2025
Days on Market	90

Zoning	Zone 25
Condo Fee	\$624

DATA IS DEEMED RELIABLE BUT IS NOT GUARANTEED ACCURATE BY THE REALTORS® ASSOCIATION OF EDMONTON. COPYRIGHT 2025 BY THE REALTORS® ASSOCIATION OF EDMONTON. ALL RIGHTS RESERVED. Trademarks are owned or controlled by the Canadian Real Estate Association (CREA) and identify real estate professionals who are members of CREA (REALTOR®, REALTORS®) and/or the quality of services they provide (MLS®, Multiple Listing Service®)

Listing information last updated on April 7th, 2025 at 5:32am MDT