

# \$489,900 - 700 10180 103 Street, Edmonton

MLS® #E4418630

**\$489,900**

2 Bedroom, 2.00 Bathroom, 1,353 sqft  
Condo / Townhouse on 0.00 Acres

Downtown (Edmonton), Edmonton, AB

**BEST VALUE IN THE BUILDING!** Spacious, bright 1352 square foot air conditioned unit in the Encore Tower a deluxe building in the heart of Edmonton's Ice District! Welcome to this stunning suite with 9' ceilings, floor to ceiling windows, two bedrooms and two baths including the primary bedroom with a luxurious 5 piece ensuite and generous walk in closet, entertaining sized living and dining rooms, a deluxe island kitchen with quartz countertops, contemporary flat panel cabinetry and stainless steel appliances. There is a convenient in suite laundry, two balconies and underground heated parking. Amenities include full concierge services, a fitness room, indoor and outdoor social rooms and a rooftop hot tub. Located close to the many great amenities of Downtown it's a must to consider!

Built in 2020

## Essential Information

MLS® #	E4418630
Price	\$489,900
Bedrooms	2
Bathrooms	2.00
Full Baths	2
Square Footage	1,353
Acres	0.00
Year Built	2020



Type	Condo / Townhouse
Sub-Type	Apartment High Rise
Style	Single Level Apartment
Status	Active

### Community Information

Address	700 10180 103 Street
Area	Edmonton
Subdivision	Downtown (Edmonton)
City	Edmonton
County	ALBERTA
Province	AB
Postal Code	T5J 0L1

### Amenities

Amenities	Air Conditioner, Ceiling 9 ft., Deck, Exercise Room, Secured Parking, Social Rooms, Concierge Service
Parking Spaces	1
Parking	Heated, Underground

### Interior

Interior Features	ensuite bathroom
Appliances	Dishwasher-Built-In, Dryer, Microwave Hood Fan, Refrigerator, Stove-Electric, Washer, Window Coverings
Heating	Heat Pump, Natural Gas
# of Stories	42
Stories	1
Has Basement	Yes
Basement	See Remarks, No Basement

### Exterior

Exterior	Concrete, Brick, Metal
Exterior Features	Flat Site, Golf Nearby, Public Transportation, Shopping Nearby, View City
Roof	EPDM Membrane
Construction	Concrete, Brick, Metal
Foundation	Concrete Perimeter

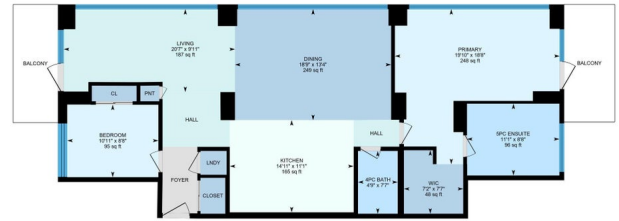
### Additional Information

Date Listed	January 19th, 2025
-------------	--------------------

Days on Market 76  
Zoning Zone 12  
Condo Fee \$1,080

700-10180 103 St NW, Edmonton, AB

Main Floor Interior Area 1303.30 sq ft



0 5 10 ft

PREPARED: 20250309

White regions are excluded from total floor area in IGLUDE floor plans. All room dimensions and floor areas must be considered approximate and are subject to independent verification.

DATA IS DEEMED RELIABLE BUT IS NOT GUARANTEED ACCURATE BY THE REALTORS<sup>®</sup> ASSOCIATION OF EDMONTON. COPYRIGHT 2025 BY THE REALTORS<sup>®</sup> ASSOCIATION OF EDMONTON. ALL RIGHTS RESERVED. Trademarks are owned or controlled by the Canadian Real Estate Association (CREA) and identify real estate professionals who are members of CREA (REALTOR<sup>®</sup>, REALTORS<sup>®</sup>) and/or the quality of services they provide (MLS<sup>®</sup>, Multiple Listing Service<sup>®</sup>)

Listing information last updated on April 5th, 2025 at 8:02pm MDT