

Courtesy Of Melissa D Shymko Of RE/MAX Real Estate

\$178,800 - 302 10105 109 Street, Edmonton

MLS® #E4420113

\$178,800

1 Bedroom, 1.00 Bathroom, 960 sqft
Condo / Townhouse on 0.00 Acres

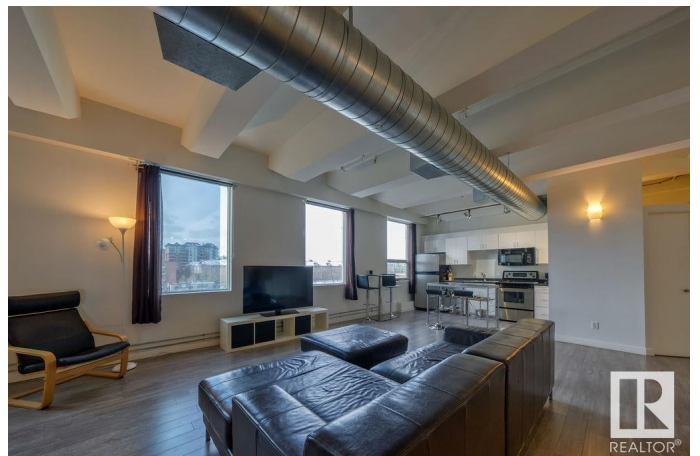
Downtown (Edmonton), Edmonton, AB

Rarely can you find an option in the core that allows both short term and long term rental options. This makes this unit a great option for people looking to invest, students to live in during the school year, and/or people who simply desire a loft space to call home. Fully furnished, this loft style condo is both bright and welcoming, featuring quality finishes in a minimalistic style. Accessible to so much - Save-on Foods directly across the street, shopping, downtown farmers market, U of A (1 LRT ride away), MacEwan, amazing restaurants and the Ice District. It is also close to the upcoming Warehouse Park and future LRT route. The building has had some extensive upgrades over the last couple years including a brand new energy efficient mechanical system (heating and cooling), and a new roof. You will appreciate the large west facing windows and the convenience this building offers to the heart of everything in the core.

Built in 1966

Essential Information

MLS® #	E4420113
Price	\$178,800
Bedrooms	1
Bathrooms	1.00



Full Baths	1
Square Footage	960
Acres	0.00
Year Built	1966
Type	Condo / Townhouse
Sub-Type	Apartment High Rise
Style	Loft
Status	Active

Community Information

Address	302 10105 109 Street
Area	Edmonton
Subdivision	Downtown (Edmonton)
City	Edmonton
County	ALBERTA
Province	AB
Postal Code	T5J 1M8

Amenities

Amenities	On Street Parking, Air Conditioner, Ceiling 10 ft., Intercom
Parking	See Remarks

Interior

Appliances	Dishwasher-Built-In, Dryer, Microwave Hood Fan, Refrigerator, Stove-Electric, Washer, Window Coverings
Heating	Forced Air-1, Natural Gas
# of Stories	10
Stories	1
Has Basement	Yes
Basement	None, No Basement

Exterior

Exterior	Concrete, Metal, Wood
Exterior Features	Commercial, Corner Lot, Golf Nearby, Public Transportation, Schools, Shopping Nearby, View City
Roof	Tar & Gravel
Construction	Concrete, Metal, Wood
Foundation	Concrete Perimeter

Additional Information

Date Listed	February 3rd, 2025
Days on Market	62
Zoning	Zone 12
Condo Fee	\$823

DATA IS DEEMED RELIABLE BUT IS NOT GUARANTEED ACCURATE BY THE REALTORS® ASSOCIATION OF EDMONTON. COPYRIGHT 2025 BY THE REALTORS® ASSOCIATION OF EDMONTON. ALL RIGHTS RESERVED. Trademarks are owned or controlled by the Canadian Real Estate Association (CREA) and identify real estate professionals who are members of CREA (REALTOR®, REALTORS®) and/or the quality of services they provide (MLS®, Multiple Listing Service®)

Listing information last updated on April 6th, 2025 at 4:47pm MDT