

Courtesy Of Jeff D Jackson Of Bode

\$599,900 - 24 Gambel Loop, Spruce Grove

MLS® #E4421479

\$599,900

3 Bedroom, 2.50 Bathroom, 2,232 sqft
Single Family on 0.00 Acres

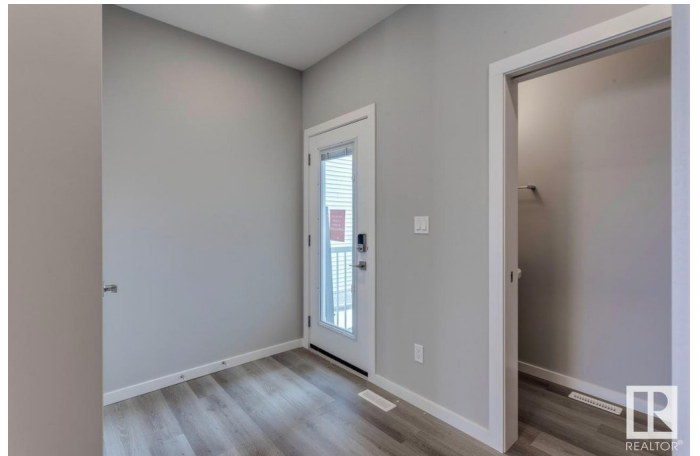
Kenton, Spruce Grove, AB

This almost 2200 sq ft stunning FULL-WALKOUT home is located in an amenity-rich community, just a short walk from Spruce Grove's new Civic center with quick and easy access to Highway 16. The home features an open-to-above great room with vaulted ceilings, a 2-storey electric fireplace, and large windows. The kitchen boasts quartz countertops and a large island. Upstairs, you will find 3 bedrooms, a bonus room and a private primary bedroom with a 4-piece ensuite. The home offers upgraded features like a widened layout, 9' ceilings on the main and basement, metal spindle railings and a smart home system. A 10x10 deck overlooks a serene pond with no rear neighbors, adding to the peaceful atmosphere of this beautiful home. Photos are representative.

Built in 2025

Essential Information

MLS® #	E4421479
Price	\$599,900
Bedrooms	3
Bathrooms	2.50
Full Baths	2
Half Baths	1
Square Footage	2,232
Acres	0.00



Year Built	2025
Type	Single Family
Sub-Type	Detached Single Family
Style	2 Storey
Status	Active

Community Information

Address	24 Gambel Loop
Area	Spruce Grove
Subdivision	Kenton
City	Spruce Grove
County	ALBERTA
Province	AB
Postal Code	T7X 0C9

Amenities

Amenities	See Remarks
Parking Spaces	4
Parking	Double Garage Attached

Interior

Interior Features	ensuite bathroom
Appliances	None
Heating	Forced Air-1, Natural Gas
Fireplace	Yes
Fireplaces	Insert
Stories	2
Has Basement	Yes
Basement	Full, Unfinished

Exterior

Exterior	Wood, Vinyl
Exterior Features	Schools, Shopping Nearby
Roof	Asphalt Shingles
Construction	Wood, Vinyl
Foundation	Concrete Perimeter

Additional Information

Date Listed	February 13th, 2025
-------------	---------------------

Days on Market 58

Zoning Zone 91

DATA IS DEEMED RELIABLE BUT IS NOT GUARANTEED ACCURATE BY THE REALTORS® ASSOCIATION OF EDMONTON. COPYRIGHT 2025 BY THE REALTORS® ASSOCIATION OF EDMONTON. ALL RIGHTS RESERVED. Trademarks are owned or controlled by the Canadian Real Estate Association (CREA) and identify real estate professionals who are members of CREA (REALTOR®, REALTORS®) and/or the quality of services they provide (MLS®, Multiple Listing Service®)

Listing information last updated on April 12th, 2025 at 7:02pm MDT