

\$570,990 - 1095 Stoneside Road, Sherwood Park

MLS® #E4421513

\$570,990

3 Bedroom, 2.50 Bathroom, 1,761 sqft
Single Family on 0.00 Acres

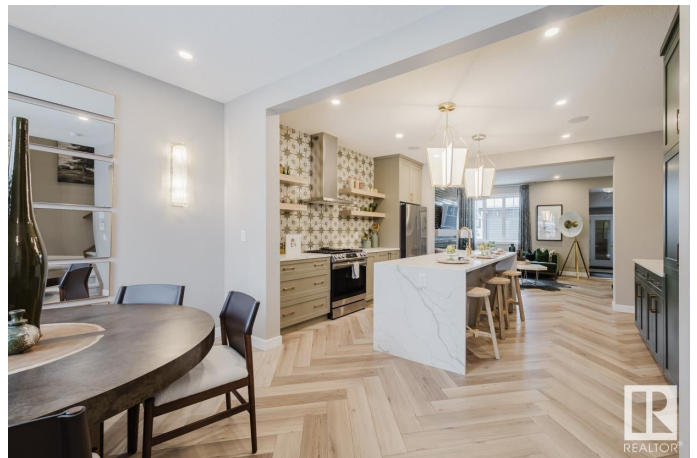
Hearthstone (Strathcona), Sherwood Park, AB

SHOWHOME! Brand New Home by Mattamy Homes in the master planned community of Hearthstone. This stunning PALLISER duplex showhome offers 3 bedrooms and 2 1/2 bathrooms. The open concept and inviting main floor features 9' ceilings, a gourmet kitchen with included appliances, quartz countertops, pantry, gas line to stove & waterline to fridge. Walk outside onto your private courtyard, or cozy up in the great room to the electric fireplace. Upstairs, you'll continue to be impressed with a convenient walk-in laundry room, full bath, and 3 bedrooms. The master is a true oasis, complete with a walk-in closet and ensuite with double sinks and separate tub/shower! Enjoy the added benefits with its double ATTACHED garage, fernsby smart home system, washer/dryer, alarm system, basement bathroom rough ins and full landscaping. Enjoy access to amenities including a playground and close access to schools, shopping, commercial, and recreational facilities. **QUICK POSSESSION!**

Built in 2022

Essential Information

MLS® #	E4421513
Price	\$570,990



Bedrooms	3
Bathrooms	2.50
Full Baths	2
Half Baths	1
Square Footage	1,761
Acres	0.00
Year Built	2022
Type	Single Family
Sub-Type	Half Duplex
Style	2 Storey
Status	Active

Community Information

Address	1095 Stoneside Road
Area	Sherwood Park
Subdivision	Hearthstone (Strathcona)
City	Sherwood Park
County	ALBERTA
Province	AB
Postal Code	T8H 3A1

Amenities

Amenities	Carbon Monoxide Detectors, Ceiling 9 ft., Detectors Smoke, Front Porch, Vinyl Windows, See Remarks, Natural Gas Stove Hookup
Parking	Double Garage Attached

Interior

Interior Features	ensuite bathroom
Appliances	Alarm/Security System, Dishwasher-Built-In, Dryer, Garage Control, Garage Opener, Hood Fan, Oven-Microwave, Refrigerator, Stove-Gas, Washer
Heating	Forced Air-1, Natural Gas
Fireplace	Yes
Fireplaces	Mantel
Stories	2
Has Basement	Yes
Basement	Full, Unfinished

Exterior

Exterior	Wood, Vinyl
Exterior Features	Landscaped, Playground Nearby, Schools, See Remarks
Roof	Asphalt Shingles
Construction	Wood, Vinyl
Foundation	Concrete Perimeter

School Information

Elementary	Davidson Creek Elementary
Middle	F.R. Haythorne Junior High
High	Bev Facey Community High

Additional Information

Date Listed	February 12th, 2025
Days on Market	55
Zoning	Zone 25

DATA IS DEEMED RELIABLE BUT IS NOT GUARANTEED ACCURATE BY THE REALTORS® ASSOCIATION OF EDMONTON. COPYRIGHT 2025 BY THE REALTORS® ASSOCIATION OF EDMONTON. ALL RIGHTS RESERVED. Trademarks are owned or controlled by the Canadian Real Estate Association (CREA) and identify real estate professionals who are members of CREA (REALTOR®, REALTORS®) and/or the quality of services they provide (MLS®, Multiple Listing Service®)

Listing information last updated on April 8th, 2025 at 1:47am MDT