

Courtesy Of Adam J Benke Of Real Broker

# \$149,900 - 46 10208 113 Street, Edmonton

MLS® #E4422647

**\$149,900**

1 Bedroom, 1.00 Bathroom, 786 sqft  
Condo / Townhouse on 0.00 Acres

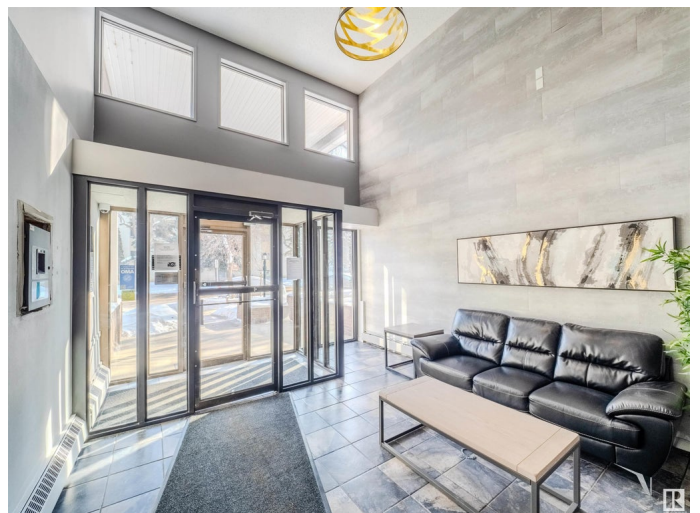
W&hkw&ant&win, Edmonton, AB

WELCOME TO PLACID PLACE, one of Downtown's BEST MANAGED and PET FRIENDLY Condominiums. This SPACIOUS 785 SqFt 1-Bedroom Condo is a perfect home for first time home buyers looking to live near The River Valley & Brewery District and close to the bustling action of Downtown. The kitchen has plenty of space for two people to move around & cook together. The over 200 Sq.ft Living room has lots of space for lounging or maybe adding a home office. KING SIZED Bedroom with large closets, 4-PC Bathroom, and best of all, IN-SUITE LAUNDRY (no sharing with others). Off the living room is a large balcony for enjoying the outdoors. This unit also comes with an additional storage cage in the building. Located on the 3rd floor, this building also features an Elevator. The complex is extremely well managed and taken care of, we think youâ€™ll love it!

Built in 1979

## Essential Information

MLS® #	E4422647
Price	\$149,900
Bedrooms	1
Bathrooms	1.00
Full Baths	1



Square Footage	786
Acres	0.00
Year Built	1979
Type	Condo / Townhouse
Sub-Type	Lowrise Apartment
Style	Single Level Apartment
Status	Active

### Community Information

Address	46 10208 113 Street
Area	Edmonton
Subdivision	WÃ©hkwÃ©ntÃ©win
City	Edmonton
County	ALBERTA
Province	AB
Postal Code	T5K 1P4

### Amenities

Amenities	Off Street Parking, On Street Parking, Deck, No Smoking Home, Parking-Visitor, Storage Cage
Parking Spaces	1
Parking	Stall

### Interior

Appliances	Dishwasher-Built-In, Hood Fan, Refrigerator, Stacked Washer/Dryer, Stove-Electric, Window Coverings
Heating	Baseboard, Natural Gas
# of Stories	4
Stories	1
Has Basement	Yes
Basement	None, See Remarks

### Exterior

Exterior	Wood, Metal
Exterior Features	Back Lane, Playground Nearby, Public Swimming Pool, Public Transportation, Schools, Shopping Nearby, View City, View Downtown
Roof	Tar & Gravel
Construction	Wood, Metal
Foundation	Concrete Perimeter

## Additional Information

Date Listed	February 24th, 2025
Days on Market	42
Zoning	Zone 12
Condo Fee	\$590

DATA IS DEEMED RELIABLE BUT IS NOT GUARANTEED ACCURATE BY THE REALTORS® ASSOCIATION OF EDMONTON. COPYRIGHT 2025 BY THE REALTORS® ASSOCIATION OF EDMONTON. ALL RIGHTS RESERVED. Trademarks are owned or controlled by the Canadian Real Estate Association (CREA) and identify real estate professionals who are members of CREA (REALTOR®, REALTORS®) and/or the quality of services they provide (MLS®, Multiple Listing Service®)

Listing information last updated on April 6th, 2025 at 11:02pm MDT