

Courtesy Of Michele A Wuerch Of MaxWell Polaris

\$295,000 - 4806 104a Street, Edmonton

MLS® #E4423877

\$295,000

2 Bedroom, 2.50 Bathroom, 1,294 sqft
Condo / Townhouse on 0.00 Acres

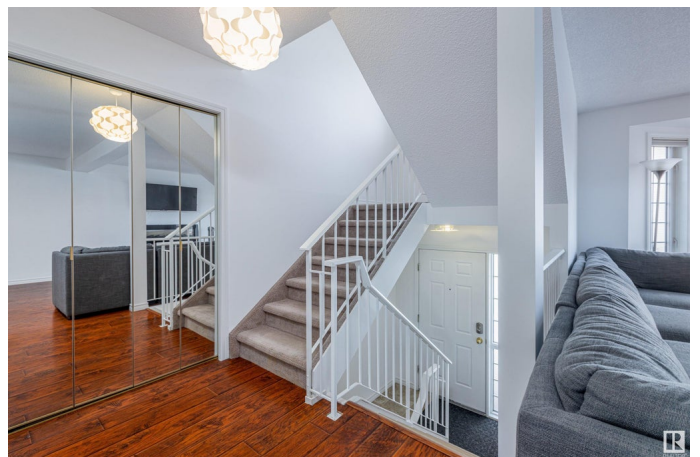
Empire Park, Edmonton, AB

Brass III at Southgate! Rare find! This beautiful 2 story style townhome boasts a distinctive blend of Victorian charm & contemporary architecture. Phenomenal location: Walking distance to Southgate Mall, LRT, restaurants, Italian Centre, Medical Centre, Superstore and much more –“ Owing a car is an option! Recently upgraded with new paint, stainless appliances and a jetted tub. Furnace & hot water tank 9 yrs old. This modern home boasts a large living/dining room with bay windows. Country style kitchen , a convenient eating nook is situated off the kitchen with patio door leading to a large deck & south facing backyard. Upstairs features TWO master bedrooms and each with a walk-in closet and ensuite. Cool in the summer with AIR CONDITIONING, and a heated insulated Tandem attached garage parking for convenience.

Built in 1993

Essential Information

MLS® #	E4423877
Price	\$295,000
Bedrooms	2
Bathrooms	2.50
Full Baths	2
Half Baths	1



Square Footage	1,294
Acres	0.00
Year Built	1993
Type	Condo / Townhouse
Sub-Type	Townhouse
Style	2 Storey
Status	Active

Community Information

Address	4806 104a Street
Area	Edmonton
Subdivision	Empire Park
City	Edmonton
County	ALBERTA
Province	AB
Postal Code	T6H 5Z1

Amenities

Amenities	Air Conditioner, Deck, Low Flw/Dual Flush Toilet, No Smoking Home, Parking-Visitor, Vinyl Windows
Parking Spaces	3
Parking	Tandem

Interior

Interior Features	ensuite bathroom
Appliances	Air Conditioning-Central, Dishwasher-Built-In, Dryer, Garage Control, Garage Opener, Microwave Hood Fan, Refrigerator, Stove-Electric, Washer, Window Coverings
Heating	Forced Air-1, Natural Gas
Fireplace	Yes
Fireplaces	Wall Mount
Stories	3
Has Basement	Yes
Basement	Full, Finished

Exterior

Exterior	Wood, Stucco, Vinyl
Exterior Features	Fenced, No Through Road, Playground Nearby, Schools, Shopping Nearby

Roof	Asphalt Shingles
Construction	Wood, Stucco, Vinyl
Foundation	Concrete Perimeter

School Information

Elementary	Mckee School
Middle	Allendale School
High	Hairy Ainlay School

Additional Information

Date Listed	March 4th, 2025
Days on Market	10
Zoning	Zone 15
Condo Fee	\$530

DATA IS DEEMED RELIABLE BUT IS NOT GUARANTEED ACCURATE BY THE REALTORS® ASSOCIATION OF EDMONTON. COPYRIGHT 2025 BY THE REALTORS® ASSOCIATION OF EDMONTON. ALL RIGHTS RESERVED. Trademarks are owned or controlled by the Canadian Real Estate Association (CREA) and identify real estate professionals who are members of CREA (REALTOR®, REALTORS®) and/or the quality of services they provide (MLS®, Multiple Listing Service®)

Listing information last updated on March 14th, 2025 at 7:02pm MDT