

Courtesy Of Joel P Teeling Of MaxWell Polaris

\$252,500 - 552 Saddleback Road, Edmonton

MLS® #E4425035

\$252,500

3 Bedroom, 2.00 Bathroom, 1,370 sqft
Condo / Townhouse on 0.00 Acres

Blue Quill, Edmonton, AB

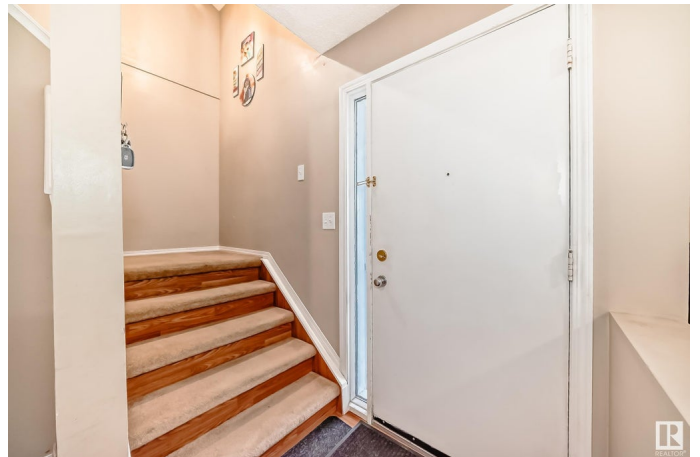
COMFORT & AFFORDABILITY IN HARMONY! Welcome, to this beautifully upgraded & well-maintained townhouse. Situated in a quiet development in the esteemed community of Blue Quill sits a property you'll love calling home. Here you'll find many extras, the likes of which are uncommon in this price point. Features like 3 **SPACIOUS** bedrooms, an upgraded kitchen, primary bedroom w/ ensuite, large living area & so much more. Upon entering, you'll appreciate the functional layout, which is flooded with natural light & appointed with a pleasing colour palette. The kitchen features upgraded cabinets & backsplash. The living room & dining area lead into the fenced backyard. The main floor also contains a 2-pc bath. Upstairs are 3 large bedrooms, including a primary that is far larger than most found in townhouses. The basement comes ready for your finishing touches! Enjoy 2 parking stalls right outside your door. Offering quick access to the LRT, shopping, bus service, parks, schools & more, you'll love living here!

Built in 1979

Essential Information

MLS® # E4425035

Price \$252,500



Bedrooms	3
Bathrooms	2.00
Full Baths	1
Half Baths	2
Square Footage	1,370
Acres	0.00
Year Built	1979
Type	Condo / Townhouse
Sub-Type	Townhouse
Style	2 Storey
Status	Active

Community Information

Address	552 Saddleback Road
Area	Edmonton
Subdivision	Blue Quill
City	Edmonton
County	ALBERTA
Province	AB
Postal Code	T6J 4Z3

Amenities

Amenities	Off Street Parking, No Smoking Home, See Remarks
Parking	2 Outdoor Stalls

Interior

Interior Features	ensuite bathroom
Appliances	Dishwasher-Built-In, Dryer, Hood Fan, Stove-Electric, Washer, See Remarks, Refrigerators-Two
Heating	Forced Air-1, Natural Gas
Stories	2
Has Basement	Yes
Basement	Full, Unfinished

Exterior

Exterior	Wood, Vinyl
Exterior Features	Fenced, Golf Nearby, Public Transportation, Schools, Shopping Nearby, Ski Hill Nearby
Roof	Asphalt Shingles

Construction	Wood, Vinyl
Foundation	Concrete Perimeter

School Information

Elementary	SWEET GRASS
Middle	VERNON BARFORD
High	HARRY AINLEY

Additional Information

Date Listed	March 11th, 2025
Days on Market	3
Zoning	Zone 16
Condo Fee	\$372

DATA IS DEEMED RELIABLE BUT IS NOT GUARANTEED ACCURATE BY THE REALTORS® ASSOCIATION OF EDMONTON. COPYRIGHT 2025 BY THE REALTORS® ASSOCIATION OF EDMONTON. ALL RIGHTS RESERVED. Trademarks are owned or controlled by the Canadian Real Estate Association (CREA) and identify real estate professionals who are members of CREA (REALTOR®, REALTORS®) and/or the quality of services they provide (MLS®, Multiple Listing Service®)

Listing information last updated on March 14th, 2025 at 3:17pm MDT