

\$184,900 - 412 13907 136 Street, Edmonton

MLS® #E4425097

\$184,900

2 Bedroom, 2.00 Bathroom, 801 sqft
Condo / Townhouse on 0.00 Acres

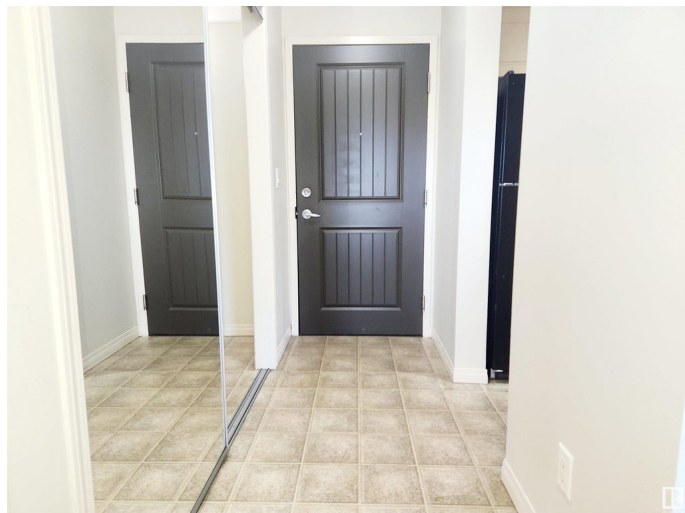
Hudson, Edmonton, AB

Don't miss this top-floor, 800 sq ft, 2-bedroom, 2-bathroom condo with in-suite laundry and storage in Hudson Village. The bright kitchen features an eating counter that overlooks the living room, cozy sitting area, and a spacious balcony. Perfect for couples or roommates, the bedrooms are thoughtfully separated by the living area. The generous primary bedroom boasts a large walk-through closet leading to a 4-piece ensuite. In the colder months, you'll appreciate the two heated underground parking spots. Hudson Village is ideally located within walking distance to Skyview Power Centre, ETS bus stops, restaurants, and offers quick access to the Henday.

Built in 2005

Essential Information

MLS® #	E4425097
Price	\$184,900
Bedrooms	2
Bathrooms	2.00
Full Baths	2
Square Footage	801
Acres	0.00
Year Built	2005
Type	Condo / Townhouse



Sub-Type	Lowrise Apartment
Style	Single Level Apartment
Status	Active

Community Information

Address	412 13907 136 Street
Area	Edmonton
Subdivision	Hudson
City	Edmonton
County	ALBERTA
Province	AB
Postal Code	T6V 1Y5

Amenities

Amenities	Parking-Visitor, Secured Parking, Storage-In-Suite, Natural Gas BBQ Hookup
Parking	Underground

Interior

Interior Features	ensuite bathroom
Appliances	Dishwasher-Built-In, Hood Fan, Refrigerator, Stacked Washer/Dryer, Stove-Electric, Washer, Window Coverings
Heating	Baseboard, Hot Water, Natural Gas
# of Stories	4
Stories	1
Has Basement	Yes
Basement	None, No Basement

Exterior

Exterior	Wood, Brick, Stucco
Exterior Features	Landscaped, No Through Road, Park/Reserve, Public Transportation, Schools, Shopping Nearby
Roof	Asphalt Shingles
Construction	Wood, Brick, Stucco
Foundation	Concrete Perimeter

Additional Information

Date Listed	March 11th, 2025
Days on Market	48
Zoning	Zone 27

Condo Fee \$574

DATA IS DEEMED RELIABLE BUT IS NOT GUARANTEED ACCURATE BY THE REALTORS® ASSOCIATION OF EDMONTON. COPYRIGHT 2025 BY THE REALTORS® ASSOCIATION OF EDMONTON. ALL RIGHTS RESERVED. Trademarks are owned or controlled by the Canadian Real Estate Association (CREA) and identify real estate professionals who are members of CREA (REALTOR®, REALTORS®) and/or the quality of services they provide (MLS®, Multiple Listing Service®)

Listing information last updated on April 28th, 2025 at 8:02am MDT