

## **\$624,000 - 8 Everwood Close, St. Albert**

---

MLS® #E4426430

**\$624,000**

5 Bedroom, 3.50 Bathroom, 1,747 sqft

Single Family on 0.00 Acres

Erin Ridge, St. Albert, AB

A rare find—this 5-bedroom, 2-storey home is tucked away on a quiet cul-de-sac in Erin Ridge, making it ideal for a large or growing family. Recently updated with a new roof and vinyl plank flooring on the second level (no carpet), the property offers modern comfort and style. On the main floor, you'll enjoy large windows, an open-concept living area with a gas fireplace, and a bright, spacious kitchen featuring an island, granite countertops, stainless steel appliances, and a large pantry. Garden doors off the dinette lead to a fully fenced backyard with a freshly painted deck. A 2-piece bath and laundry room complete this level. Upstairs, four generous bedrooms await, alongside a 3-piece bath and a 4-piece ensuite in the primary bedroom, which includes a big walk-in closet. The fully finished basement provides a fifth bedroom, a huge recreation room, a 3-piece bath, and storage space. Conveniently located near walking trails, schools, and amenities, this home is ready to welcome you!

Built in 2003

### **Essential Information**

MLS® #	E4426430
Price	\$624,000
Bedrooms	5



Bathrooms 3.50  
 Full Baths 3  
 Half Baths 1  
 Square Footage 1,747  
 Acres 0.00  
 Year Built 2003  
 Type Single Family  
 Sub-Type Detached Single Family  
 Style 2 Storey  
 Status Active

### Community Information

Address 8 Everwood Close  
 Area St. Albert  
 Subdivision Erin Ridge  
 City St. Albert  
 County ALBERTA  
 Province AB  
 Postal Code T8N 7H1

### Amenities

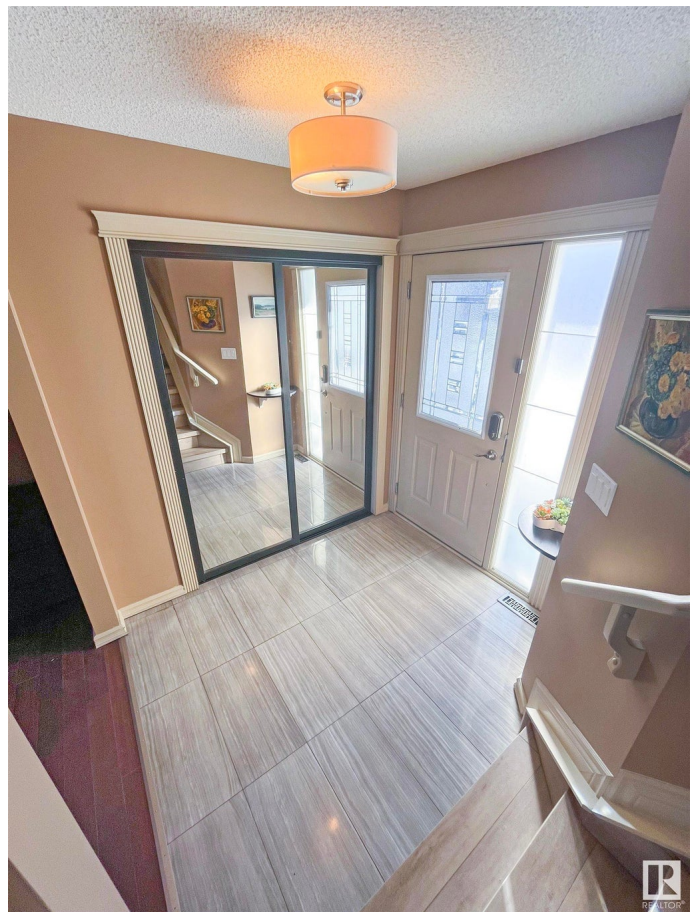
Amenities Deck, Wet Bar  
 Parking Double Garage Attached

### Interior

Interior Features ensuite bathroom  
 Appliances Dishwasher-Built-In, Dryer, G  
 Hood Fan, Refrigerator, Stor  
 Coverings  
 Heating Forced Air-1, Natural Gas  
 Stories 3  
 Has Basement Yes  
 Basement Full, Finished

### Exterior

Exterior Wood, Vinyl  
 Exterior Features Fenced, Flat Site  
 Roof Asphalt Shingles  
 Construction Wood, Vinyl



Foundation Concrete Perimeter

### **Additional Information**

Date Listed March 19th, 2025

Days on Market 18

Zoning Zone 24

DATA IS DEEMED RELIABLE BUT IS NOT GUARANTEED ACCURATE BY THE REALTORS® ASSOCIATION OF EDMONTON. COPYRIGHT 2025 BY THE REALTORS® ASSOCIATION OF EDMONTON. ALL RIGHTS RESERVED. Trademarks are owned or controlled by the Canadian Real Estate Association (CREA) and identify real estate professionals who are members of CREA (REALTOR®, REALTORS®) and/or the quality of services they provide (MLS®, Multiple Listing Service®)

Listing information last updated on April 6th, 2025 at 5:02pm MDT