

## \$599,900 - 111 Eastcott Drive, St. Albert

MLS® #E4426893

**\$599,900**

4 Bedroom, 3.50 Bathroom, 2,035 sqft

Single Family on 0.00 Acres

Erin Ridge, St. Albert, AB

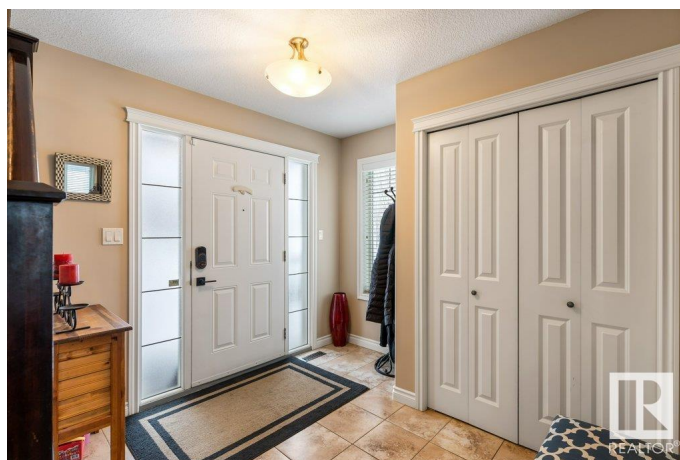
Beautifully upgraded 2,035 sq. ft. 2 story home on a large corner lot on a fabulous crescent. As you enter the spacious foyer, youâ€™re welcomed by ceramic tile and gleaming hardwood floors that flow thru out the main level. The functional GR concept features a cozy gas fireplace, overlooking the raised eating bar KI with an abundance of dark cabinetry, S/S appliances, and a spacious dining area. A walk-thru pantry leads to the back entry with a convenient 2-pce. powder room. Upstairs, a bright and airy bonus room with huge windows floods the space with natural light. The second floor also boasts a laundry room and three bedrooms, including a luxurious primary suite with a 5-pce. Jacuzzi ensuite, separate shower, and walk-in closet. The fully developed basement offers a fourth bedroom, 3-piece bath with heated tile flooring, and extra living space. Outside, enjoy a beautifully landscaped yard with a large deck, gas line for BBQ, mature trees, and an oversized double garage with extra driveway parking pad.

Built in 2006

### Essential Information

MLS® # E4426893

Price \$599,900



|                |                        |
|----------------|------------------------|
| Bedrooms       | 4                      |
| Bathrooms      | 3.50                   |
| Full Baths     | 3                      |
| Half Baths     | 1                      |
| Square Footage | 2,035                  |
| Acres          | 0.00                   |
| Year Built     | 2006                   |
| Type           | Single Family          |
| Sub-Type       | Detached Single Family |
| Style          | 2 Storey               |
| Status         | Active                 |

### **Community Information**

|             |                    |
|-------------|--------------------|
| Address     | 111 Eastcott Drive |
| Area        | St. Albert         |
| Subdivision | Erin Ridge         |
| City        | St. Albert         |
| County      | ALBERTA            |
| Province    | AB                 |
| Postal Code | T8N 7L6            |

### **Amenities**

|                |   |
|----------------|---|
| Amenities      | Deck, Fire Pit, Front Porch, Gazebo, Natural Gas BBQ Hookup |
| Parking Spaces | 4   |
| Parking        | Double Garage Attached, Over Sized                          |

### **Interior**

|                   |  |
|-------------------|--|
| Interior Features | ensuite bathroom   |
| Appliances        | Dishwasher-Built-In, Dryer, Garage Control, Garage Opener, Microwave Hood Fan, Refrigerator, Stove-Electric, Vacuum System Attachments, Vacuum Systems, Window Coverings |
| Heating           | Forced Air-1, Natural Gas  |
| Fireplace         | Yes  |
| Fireplaces        | Tile Surround  |
| Stories           | 3  |
| Has Basement      | Yes  |
| Basement          | Full, Finished   |

### **Exterior**

|                   |  |
|-------------------|--|
| Exterior          | Wood, Brick, Vinyl   |
| Exterior Features | Corner Lot, Fenced, Golf Nearby, Landscaped, Park/Reserve, Playground Nearby, Schools, Shopping Nearby |
| Roof              | Asphalt Shingles   |
| Construction      | Wood, Brick, Vinyl   |
| Foundation        | Concrete Perimeter   |

### **Additional Information**

|                |                  |
|----------------|------------------|
| Date Listed    | March 21st, 2025 |
| Days on Market | 16               |
| Zoning         | Zone 24          |

DATA IS DEEMED RELIABLE BUT IS NOT GUARANTEED ACCURATE BY THE REALTORS® ASSOCIATION OF EDMONTON. COPYRIGHT 2025 BY THE REALTORS® ASSOCIATION OF EDMONTON. ALL RIGHTS RESERVED. Trademarks are owned or controlled by the Canadian Real Estate Association (CREA) and identify real estate professionals who are members of CREA (REALTOR®, REALTORS®) and/or the quality of services they provide (MLS®, Multiple Listing Service®)

Listing information last updated on April 6th, 2025 at 1:02pm MDT