

\$179,000 - 684 Abbottsfield Road, Edmonton

MLS® #E4427003

\$179,000

3 Bedroom, 1.50 Bathroom, 1,004 sqft
Condo / Townhouse on 0.00 Acres

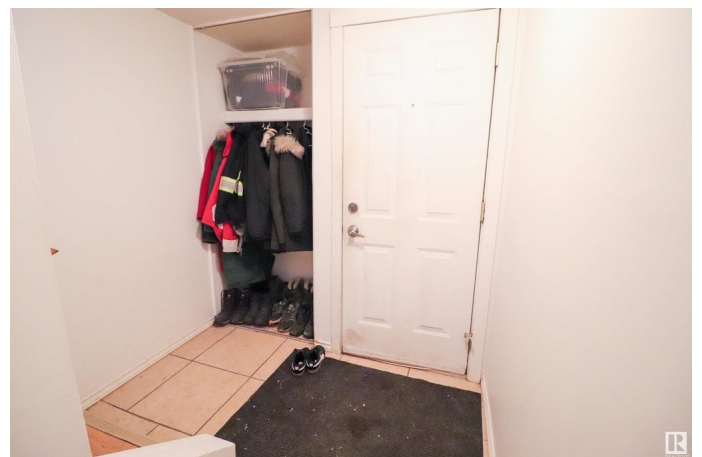
Abbottsfield, Edmonton, AB

Ready to stop renting or looking for a great investment? Welcome to Riverridge! This 3 Bed 1 ½ Bath townhome features an open concept main floor, 3 spacious bedrooms, a large WEST FACING SUNNY fenced yard & lots of storage. The home features warm laminate floors throughout and has been freshly painted. The great room is large with a big window overlooking the fenced backyard with tons of perennials & a large garden space. The kitchen has updated countertops & appliances that opens onto the dining area, large enough for a 6 person table. Completing this level of the home is a ½ bath. Upstairs are the 3 bedrooms & main bath. The unfinished basement is a great storage space where you'll find an updated washer & dryer. Hot water tank recently changed. An outdoor covered carport is also included. Welcome HOME! Low condo fee only \$199.50/mth; pet friendly complex

Built in 1972

Essential Information

MLS® #	E4427003
Price	\$179,000
Bedrooms	3
Bathrooms	1.50
Full Baths	1



Half Baths	1
Square Footage	1,004
Acres	0.00
Year Built	1972
Type	Condo / Townhouse
Sub-Type	Townhouse
Style	2 Storey
Status	Active

Community Information

Address	684 Abbottsfield Road
Area	Edmonton
Subdivision	Abbottsfield
City	Edmonton
County	ALBERTA
Province	AB
Postal Code	T6W 4R4

Amenities

Amenities	Parking-Visitor, See Remarks
Parking	Single Carport

Interior

Appliances	Dishwasher-Built-In, Dryer, Hood Fan, Refrigerator, Stove-Electric, Washer, Window Coverings
Heating	Forced Air-1, Natural Gas
Stories	2
Has Basement	Yes
Basement	Full, Unfinished

Exterior

Exterior	Wood
Exterior Features	Fenced, Landscaped, Level Land, Low Maintenance Landscape, Playground Nearby, Public Swimming Pool, Public Transportation, Schools, Shopping Nearby
Roof	Asphalt Shingles
Construction	Wood
Foundation	Concrete Perimeter

Additional Information

Date Listed March 22nd, 2025
Days on Market 15
Zoning Zone 23
Condo Fee \$200



DATA IS DEEMED RELIABLE BUT IS NOT GUARANTEED ACCURATE BY THE REALTORS® ASSOCIATION OF EDMONTON. COPYRIGHT 2025 BY THE REALTORS® ASSOCIATION OF EDMONTON. ALL RIGHTS RESERVED. Trademarks are owned or controlled by the Canadian Real Estate Association (CREA) and identify real estate professionals who are members of CREA (REALTOR®, REALTORS®) and/or the quality of services they provide (MLS®, Multiple Listing Service®)

Listing information last updated on April 5th, 2025 at 11:17pm MDT