

Courtesy Of Tammy A Booth Of 2% Realty

## **\$469,900 - 1987 Avondale Crest, Sherwood Park**

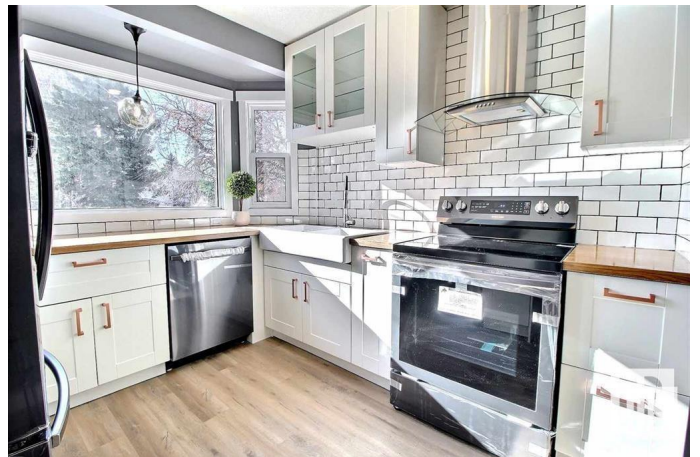
MLS® #E4427171

**\$469,900**

5 Bedroom, 2.50 Bathroom, 971 sqft  
Single Family on 0.00 Acres

Broadmoor, Sherwood Park, AB

Broadmoor Estates GEM! Professionally renovated in 2021. This beautiful bungalow is nestled nicely in a quiet cul-de-sac. Enjoy approx. 1,942 sqft of total living space with the fully finished basement. Features 3+2 bdrms, 2.5 baths & a double detached HEATED grg. Since 2021 the west fence with gate has been replaced and NEW electrical panel. Upon entering the home, you will be impressed with modern vinyl plank flooring that flows through the entire main floor. An inviting living room with large bay window that bathes this space with warming natural light. A stunning kitchen with upgraded appliances subway tile backsplash, timeless white cabinets with chic copper colored handles another large bay window overlooking the private backyard. Main floor is completed with 3 bedrooms and a stylish 5-piece main bath. The bsmt features a large recreational room, 2 additional bdrm, a half bath and a master bedroom with a beautiful 3-piece ensuite!



Built in 1962

### **Essential Information**

MLS® #	E4427171
Price	\$469,900
Bedrooms	5
Bathrooms	2.50

Full Baths	2
Half Baths	1
Square Footage	971
Acres	0.00
Year Built	1962
Type	Single Family
Sub-Type	Detached Single Family
Style	Bungalow
Status	Active

### **Community Information**

Address	1987 Avondale Crest
Area	Sherwood Park
Subdivision	Broadmoor
City	Sherwood Park
County	ALBERTA
Province	AB
Postal Code	T8A 0Y1

### **Amenities**

Amenities	Patio, R.V. Storage, Vinyl Windows, See Remarks
Parking	Double Garage Detached, Heated

### **Interior**

Interior Features	ensuite bathroom
Appliances	Dishwasher-Built-In, Dryer, Freezer, Garage Control, Garage Opener, Hood Fan, Oven-Microwave, Refrigerator, Stove-Electric, Washer, Window Coverings
Heating	Forced Air-1, Natural Gas
Stories	2
Has Basement	Yes
Basement	Full, Finished

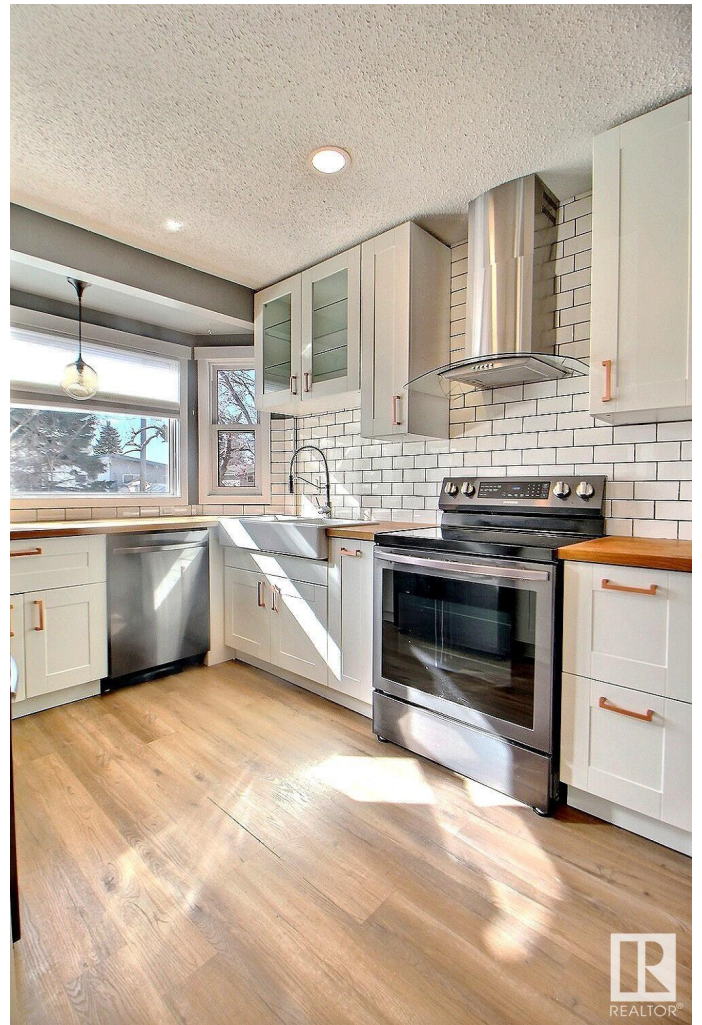
### **Exterior**

Exterior	Wood, Vinyl
Exterior Features	Cul-De-Sac, Fenced, Landscaped, Playground Nearby, Public Swimming Pool, Public Transportation, Schools, Shopping Nearby, See Remarks
Roof	Asphalt Shingles

Construction Wood, Vinyl  
Foundation Concrete Perimeter

**Additional Information**

Date Listed March 24th, 2025  
Days on Market 14  
Zoning Zone 25



DATA IS DEEMED RELIABLE BUT IS NOT GUARANTEED ACCURATE BY THE REALTORS® ASSOCIATION OF EDMONTON. COPYRIGHT 2025 BY THE REALTORS® ASSOCIATION OF EDMONTON. ALL RIGHTS RESERVED. Trademarks are owned or controlled by the Canadian Real Estate Association (CREA) and identify real estate professionals who are members of CREA (REALTOR®, REALTORS®) and/or the quality of services they provide (MLS®, Multiple Listing Service®)

Listing information last updated on April 7th, 2025 at 10:02am MDT