

\$559,900 - 4019 164 Avenue, Edmonton

MLS® #E4428279

\$559,900

5 Bedroom, 3.00 Bathroom, 1,428 sqft
Single Family on 0.00 Acres

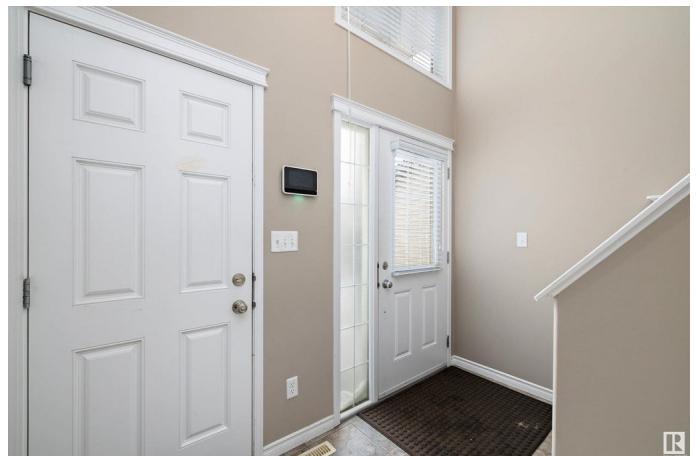
Brintnell, Edmonton, AB

Beautiful Bi-level in Brintnell! With over 2200sqft of livable space, this 2010-built home is ideal for a large family as it ft. 5 bedrooms, 3, bathrooms, a double ATTACHED garage, and an EXTRA WIDE driveway. Enter and appreciate the gleaming HARDWOOD floors, VAULTED ceilings, and CENTRAL-A/C. The modern, OPEN CONCEPT floor plan is inviting and completed by a chef's kitchen ft. newer S/S appliances, prep island w/ eat-in bar, corner pantry, and tons of counter space. The living room and dining area are both spacious and sun-lit by the SOUTHWEST-facing backyard. Additionally, there are two large bedrooms and a 4pc bath all on the main floor. On the upper level, there's a comfortable primary room that includes a 3pc ensuite and W/I closet. Downstairs, there's two additional bedrooms, a 4pc bath, and large family room w/ a corner GAS F/P. This exceptional property has over \$44,000 of recent improvements including: new concrete walkway, BBQ gas line, shed, gazebo, security system, blinds, and deck extension.

Built in 2010

Essential Information

MLS® #	E4428279
Price	\$559,900



Bedrooms	5
Bathrooms	3.00
Full Baths	3
Square Footage	1,428
Acres	0.00
Year Built	2010
Type	Single Family
Sub-Type	Detached Single Family
Style	Bi-Level
Status	Active

Community Information

Address	4019 164 Avenue
Area	Edmonton
Subdivision	Brintnell
City	Edmonton
County	ALBERTA
Province	AB
Postal Code	T5Y 0M6

Amenities

Amenities	Off Street Parking, Air Conditioner, Ceiling 9 ft., Deck, Parking-Extra, Vaulted Ceiling
Parking	Double Garage Attached

Interior

Interior Features	ensuite bathroom
Appliances	Dishwasher-Built-In, Dryer, Microwave Hood Fan, Stove-Electric, Washer
Heating	Forced Air-1, Natural Gas
Fireplace	Yes
Fireplaces	Corner
Stories	2
Has Basement	Yes
Basement	Full, Finished

Exterior

Exterior	Wood, Stone, Vinyl
Exterior Features	Fenced, Flat Site, Landscaped, Level Land, No Back Lane, Schools,

Shopping Nearby

Roof Asphalt Shingles
Construction Wood, Stone, Vinyl
Foundation Concrete Perimeter

School Information

Elementary Delwood School
Middle Balwin School
High M.E. LaZerte School

Additional Information

Date Listed March 31st, 2025
Days on Market 5
Zoning Zone 03

DATA IS DEEMED RELIABLE BUT IS NOT GUARANTEED ACCURATE BY THE REALTORS® ASSOCIATION OF EDMONTON. COPYRIGHT 2025 BY THE REALTORS® ASSOCIATION OF EDMONTON. ALL RIGHTS RESERVED. Trademarks are owned or controlled by the Canadian Real Estate Association (CREA) and identify real estate professionals who are members of CREA (REALTOR®, REALTORS®) and/or the quality of services they provide (MLS®, Multiple Listing Service®)

Listing information last updated on April 5th, 2025 at 8:02pm MDT