

# \$549,900 - 7 Pineridge Crescent, St. Albert

MLS® #E4429021

**\$549,900**

4 Bedroom, 3.00 Bathroom, 1,713 sqft

Single Family on 0.00 Acres

Pineview, St. Albert, AB

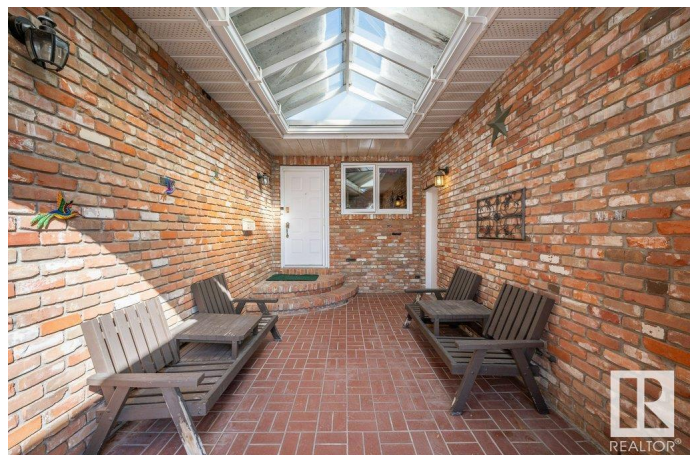
This 1,700+ SqFt Ken Payne-built bungalow in Pineview is perfect for a growing family!

Tucked away on a quiet crescent with quick Henday access, it offers convenience and comfort. The main floor has plenty of space to gather, with a formal living & dining room, plus a spacious kitchen that opens to a cozy sunken family room with a beautiful brick gas fireplace. The private backyard is a dream—professionally landscaped, filled with mature trees, and complete with an underground sprinkler system. Recent updates include a newer roof, front eaves, and garage door, as well as plumbing upgrades under the sinks. With 3 bedrooms upstairs and 1 in the fully finished basement, there's room for everyone to spread out and enjoy. Located on a friendly, mature street, this home is ready for your family to make lasting memories!

Built in 1980

## Essential Information

MLS® #	E4429021
Price	\$549,900
Bedrooms	4
Bathrooms	3.00
Full Baths	3
Square Footage	1,713
Acres	0.00



Year Built	1980
Type	Single Family
Sub-Type	Detached Single Family
Style	Bungalow
Status	Active

### **Community Information**

Address	7 Pineridge Crescent
Area	St. Albert
Subdivision	Pineview
City	St. Albert
County	ALBERTA
Province	AB
Postal Code	T8N 4P3

### **Amenities**

Amenities	Deck, Fire Pit, Patio, Sauna; Swirlpool; Steam, Sprinkler Sys-Underground
Parking	Double Garage Attached

### **Interior**

Interior Features	ensuite bathroom
Appliances	Dishwasher-Built-In, Dryer, Garage Control, Garage Opener, Garburator, Microwave Hood Fan, Refrigerator, Storage Shed, Stove-Electric, Vacuum System Attachments, Vacuum Systems, Washer, Window Coverings
Heating	Forced Air-2, Natural Gas
Fireplace	Yes
Fireplaces	Brick Facing
Stories	2
Has Basement	Yes
Basement	Full, Finished

### **Exterior**

Exterior	Wood, Brick
Exterior Features	Fenced, Flat Site, Landscaped, Park/Reserve, Playground Nearby, Schools, Shopping Nearby
Roof	Asphalt Shingles
Construction	Wood, Brick
Foundation	Concrete Perimeter

## Additional Information

Date Listed April 4th, 2025

Days on Market 1

Zoning Zone 24

DATA IS DEEMED RELIABLE BUT IS NOT GUARANTEED ACCURATE BY THE REALTORS® ASSOCIATION OF EDMONTON. COPYRIGHT 2025 BY THE REALTORS® ASSOCIATION OF EDMONTON. ALL RIGHTS RESERVED. Trademarks are owned or controlled by the Canadian Real Estate Association (CREA) and identify real estate professionals who are members of CREA (REALTOR®, REALTORS®) and/or the quality of services they provide (MLS®, Multiple Listing Service®)

Listing information last updated on April 5th, 2025 at 6:47am MDT